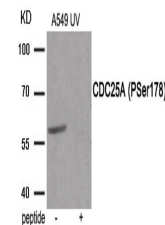


Product Datasheet

CDC25A Antibody (orb1252944)

Description	CDC25A Antibody
Species/Host	Rabbit
Reactivity	Human, Mouse, Rat
Conjugation	Unconjugated
Tested Applications	WB
Immunogen	CDC25A (phospho Ser178) antibody was raised against a peptide sequence around phosphorylation site of serine 178 (Q-N-S (p)-A-P) derived from Human CDC25A .
Target	CDC25A
Preservatives	Antibody supplied in phosphate buffered saline (without Mg ²⁺ and Ca ²⁺), pH 7.4, 150mM NaCl, 0.02% sodium azide and 50% glycerol.
Form/Appearance	Liquid
Concentration	1 mg/mL
Storage	Store antibody at -20°C for up to one year.
Note	For research use only
Application notes	Western Blot: 1:500~1:1000
Isotype	IgG
Clonality	Polyclonal
MW	59 kDa
Uniprot ID	P30304
NCBI	NP_001780.2
Dilution Range	Western Blot: 1:500~1:1000
Expiration Date	12 months from date of receipt.



Western blot analysis of extracts from A...