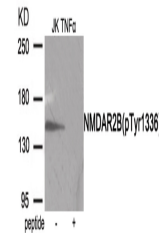


## Product Datasheet

### GRIN2B Antibody (orb1252933)

|                            |  |
|----------------------------|--|
| <b>Description</b>         | GRIN2B Antibody  |
| <b>Species/Host</b>        | Rabbit   |
| <b>Reactivity</b>          | Human, Mouse, Rat  |
| <b>Conjugation</b>         | Unconjugated   |
| <b>Tested Applications</b> | WB   |
| <b>Immunogen</b>           | NMDAR2B (phospho Tyr1336) antibody was raised against a peptide sequence around phosphorylation site of Tyrosine1336 (S-P-Y (p)-A-H) derived from Human NMDAR2B. |
| <b>Target</b>              | GRIN2B   |
| <b>Preservatives</b>       | Antibody supplied in phosphate buffered saline (without Mg <sup>2+</sup> and Ca <sup>2+</sup> ), pH 7.4, 150mM NaCl, 0.02% sodium azide and 50% glycerol.        |
| <b>Form/Appearance</b>     | Liquid   |
| <b>Concentration</b>       | 1 mg/mL  |
| <b>Storage</b>             | Store antibody at -20°C for up to one year.  |
| <b>Note</b>                | For research use only  |
| <b>Application notes</b>   | Western Blot: 1:500~1:1000   |
| <b>Isotype</b>             | IgG  |
| <b>Clonality</b>           | Polyclonal   |
| <b>MW</b>                  | 150 kDa  |
| <b>Uniprot ID</b>          | <a href="#">Q13224</a>   |
| <b>NCBI</b>                | <a href="#">NP_000825.2</a>  |
| <b>Dilution Range</b>      | Western Blot: 1:500~1:1000   |
| <b>Expiration Date</b>     | 12 months from date of receipt.  |



Western blot analysis of extracts from J...