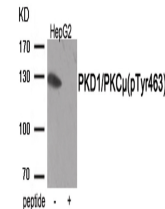


Product Datasheet

PRKD1 Antibody (orb1252931)

Description	PRKD1 Antibody
Species/Host	Rabbit
Reactivity	Human, Mouse, Rat
Conjugation	Unconjugated
Tested Applications	WB
Immunogen	PKD1/PKC μ (phospho Tyr463) antibody was raised against a peptide sequence around phosphorylation site of Tyrosine463 (R-Y-Y (p)-K-E) derived from Human PKD1/PKC μ .
Target	PRKD1
Preservatives	Antibody supplied in phosphate buffered saline (without Mg ²⁺ and Ca ²⁺), pH 7.4, 150mM NaCl, 0.02% sodium azide and 50% glycerol.
Form/Appearance	Liquid
Concentration	1 mg/mL
Storage	Store antibody at -20°C for up to one year.
Note	For research use only
Application notes	Western Blot: 1:500~1:1000
Isotype	IgG
Clonality	Polyclonal
MW	130 kDa
Uniprot ID	Q15139
NCBI	NP_002733.2
Dilution Range	Western Blot: 1:500~1:1000
Expiration Date	12 months from date of receipt.



Western blot analysis of extracts from H...