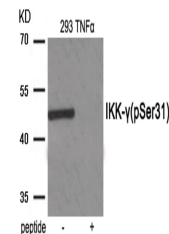


Product Datasheet

IKBKG Antibody (orb1252926)

Description	IKBKG Antibody
Species/Host	Rabbit
Reactivity	Human
Conjugation	Unconjugated
Tested Applications	WB
Immunogen	IKK- gamma (phospho Ser31) antibody was raised against a peptide sequence around phosphorylation site of serine 31 (E-E-S (p)-P-L) derived from Human IKK-gamma.
Target	IKBKG
Preservatives	Antibody supplied in phosphate buffered saline (without Mg ²⁺ and Ca ²⁺), pH 7.4, 150mM NaCl, 0.02% sodium azide and 50% glycerol.
Form/Appearance	Liquid
Concentration	1 mg/mL
Storage	Store antibody at -20°C for up to one year.
Note	For research use only
Application notes	Western Blot: 1:500~1:1000
Isotype	IgG
Clonality	Polyclonal
MW	48 kDa
Uniprot ID	Q9Y6K9
NCBI	NP_001093326.2
Dilution Range	Western Blot: 1:500~1:1000
Expiration Date	12 months from date of receipt.



Western blot analysis of extracts from 2...