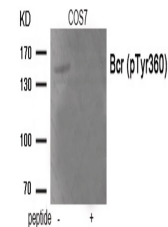


Product Datasheet

BCR Antibody (orb1252921)

Description	BCR Antibody
Species/Host	Rabbit
Reactivity	Human, Mouse
Conjugation	Unconjugated
Tested Applications	WB
Immunogen	Bcr (phospho Tyr360) antibody was raised against a peptide sequence around phosphorylation site of tyrosine 360 (T-T-Y (p)-R-M) derived from Human Bcr.
Target	BCR
Preservatives	Antibody supplied in phosphate buffered saline (without Mg ²⁺ and Ca ²⁺), pH 7.4, 150mM NaCl, 0.02% sodium azide and 50% glycerol.
Form/Appearance	Liquid
Concentration	1 mg/mL
Storage	Store antibody at -20°C for up to one year.
Note	For research use only
Application notes	Western Blot: 1:500~1:1000
Isotype	IgG
Clonality	Polyclonal
MW	142 kDa
Uniprot ID	P11274
NCBI	NP_004318.3
Dilution Range	Western Blot: 1:500~1:1000
Expiration Date	12 months from date of receipt.



Western blot analysis of extracts from C...