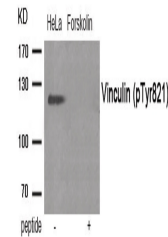


Product Datasheet

VCL Antibody (orb1252920)

Description	VCL Antibody
Species/Host	Rabbit
Reactivity	Human, Mouse, Rat
Conjugation	Unconjugated
Tested Applications	WB
Immunogen	Vinculin (phospho Tyr821) antibody was raised against a peptide sequence around phosphorylation site of Tyrosine 821 (S-G-Y (p)-R-I) derived from Human Vinculin.
Target	VCL
Preservatives	Antibody supplied in phosphate buffered saline (without Mg ²⁺ and Ca ²⁺), pH 7.4, 150mM NaCl, 0.02% sodium azide and 50% glycerol.
Form/Appearance	Liquid
Concentration	1 mg/mL
Storage	Store antibody at -20°C for up to one year.
Note	For research use only
Application notes	Western Blot: 1:500~1:1000
Isotype	IgG
Clonality	Polyclonal
MW	123 kDa
Uniprot ID	P18206
NCBI	NP_003364.1
Dilution Range	Western Blot: 1:500~1:1000
Expiration Date	12 months from date of receipt.



Western blot analysis of extracts from H...