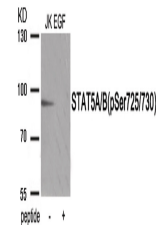


Product Datasheet

STAT5A, STAT5B Antibody (orb1252916)

Description	STAT5A, STAT5B Antibody
Species/Host	Rabbit
Reactivity	Human, Mouse, Rat
Conjugation	Unconjugated
Tested Applications	WB
Immunogen	STAT5A/B (phospho Ser725/730) antibody was raised against a peptide sequence around phosphorylation site of serine725/730 (A-P-S (p)-P-A) derived from Human STAT5A/B .
Target	STAT5A, STAT5B
Preservatives	Antibody supplied in phosphate buffered saline (without Mg ²⁺ and Ca ²⁺), pH 7.4, 150mM NaCl, 0.02% sodium azide and 50% glycerol.
Form/Appearance	Liquid
Concentration	1 mg/mL
Storage	Store antibody at -20°C for up to one year.
Note	For research use only
Application notes	Western Blot: 1:500~1:1000
Isotype	IgG
Clonality	Polyclonal
MW	90 kDa
Uniprot ID	P42229 , P51692
NCBI	NP_001275647.1 , NP_036580.2
Dilution Range	Western Blot: 1:500~1:1000
Expiration Date	12 months from date of receipt.



Western blot analysis of extracts from J...