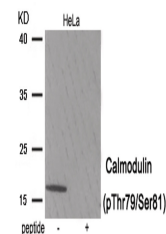


Product Datasheet

CALM3 Antibody (orb1252915)

Description	CALM3 Antibody
Species/Host	Rabbit
Reactivity	Human, Mouse, Rat
Conjugation	Unconjugated
Tested Applications	WB
Immunogen	Calmodulin (phospho Thr79/Ser81) antibody was raised against a peptide sequence around phosphorylation site of threonine79/serine81 (K-D-T (p)-D-S (p)-E-E) derived from Human Calmodulin .
Target	CALM3
Preservatives	Antibody supplied in phosphate buffered saline (without Mg ²⁺ and Ca ²⁺), pH 7.4, 150mM NaCl, 0.02% sodium azide and 50% glycerol.
Form/Appearance	Liquid
Concentration	1 mg/mL
Storage	Store antibody at -20°C for up to one year.
Note	For research use only
Application notes	Western Blot: 1:500~1:1000
Isotype	IgG
Clonality	Polyclonal
MW	17 kDa
Uniprot ID	P62158
NCBI	NP_005175.2
Dilution Range	Western Blot: 1:500~1:1000
Expiration Date	12 months from date of receipt.



Western blot analysis of extracts from H...