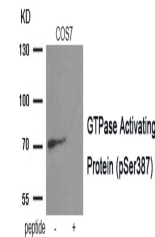


Product Datasheet

RACGAP1 Antibody (orb1252910)

Description	RACGAP1 Antibody
Species/Host	Rabbit
Reactivity	Human, Mouse, Rat
Conjugation	Unconjugated
Tested Applications	WB
Immunogen	GTPase Activating Protein (phospho Ser387) antibody was raised against a peptide sequence around phosphorylation site of serine 387 (R-I-S (p)-G-C) derived from Human GTPase Activating Protein.
Target	RACGAP1
Preservatives	Antibody supplied in phosphate buffered saline (without Mg ²⁺ and Ca ²⁺), pH 7.4, 150mM NaCl, 0.02% sodium azide and 50% glycerol.
Form/Appearance	Liquid
Concentration	1 mg/mL
Storage	Store antibody at -20°C for up to one year.
Note	For research use only
Application notes	Western Blot: 1:500~1:1000
Isotype	IgG
Clonality	Polyclonal
MW	72 kDa
Uniprot ID	Q9H0H5
NCBI	NP_001119575.1
Dilution Range	Western Blot: 1:500~1:1000
Expiration Date	12 months from date of receipt.



Western blot analysis of extracts from C...