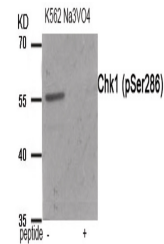


## Product Datasheet

### CHEK1 Antibody (orb1252906)

<b>Description</b>	CHEK1 Antibody
<b>Species/Host</b>	Rabbit
<b>Reactivity</b>	Human
<b>Conjugation</b>	Unconjugated
<b>Tested Applications</b>	WB
<b>Immunogen</b>	Chk1 (phospho Ser286) antibody was raised against a peptide sequence around phosphorylation site of serine 286 (S-E-S (p)-P-S) derived from Human Chk1.
<b>Target</b>	CHEK1
<b>Preservatives</b>	Antibody supplied in phosphate buffered saline (without Mg <sup>2+</sup> and Ca <sup>2+</sup> ), pH 7.4, 150mM NaCl, 0.02% sodium azide and 50% glycerol.
<b>Form/Appearance</b>	Liquid
<b>Concentration</b>	1 mg/mL
<b>Storage</b>	Store antibody at -20°C for up to one year.
<b>Note</b>	For research use only
<b>Application notes</b>	Western Blot: 1:500~1:1000
<b>Isotype</b>	IgG
<b>Clonality</b>	Polyclonal
<b>MW</b>	55 kDa
<b>Uniprot ID</b>	<a href="#">O14757</a>
<b>NCBI</b>	<a href="#">NP_001107593.1</a>
<b>Dilution Range</b>	Western Blot: 1:500~1:1000
<b>Expiration Date</b>	12 months from date of receipt.



Western blot analysis of extracts from K...