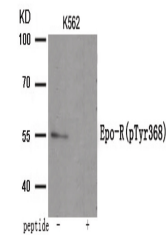


Product Datasheet

EPOR Antibody (orb1252898)

Description	EPOR Antibody
Species/Host	Rabbit
Reactivity	Human, Mouse, Rat
Conjugation	Unconjugated
Tested Applications	WB
Immunogen	Epo-R (phospho Tyr368) antibody was raised against a peptide sequence around phosphorylation site of Tyrosine 368 (D-T-Y (p)-L-V) derived from Human Epo-R.
Target	EPOR
Preservatives	Antibody supplied in phosphate buffered saline (without Mg ²⁺ and Ca ²⁺), pH 7.4, 150mM NaCl, 0.02% sodium azide and 50% glycerol.
Form/Appearance	Liquid
Concentration	1 mg/mL
Storage	Store antibody at -20°C for up to one year.
Note	For research use only
Application notes	Western Blot: 1:500~1:1000
Isotype	IgG
Clonality	Polyclonal
MW	55 kDa
Uniprot ID	P19235
NCBI	NP_000112.1
Dilution Range	Western Blot: 1:500~1:1000
Expiration Date	12 months from date of receipt.



Western blot analysis of extracts from K...