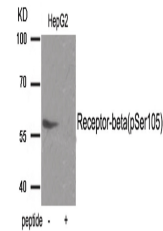


Product Datasheet

ESR2 Antibody (orb1252896)

Description	ESR2 Antibody
Species/Host	Rabbit
Reactivity	Human, Mouse, Rat
Conjugation	Unconjugated
Tested Applications	WB
Immunogen	Estrogen Receptor- beta (phospho Ser105) antibody was raised against a peptide sequence around phosphorylation site of serine105 (Q-R-S (p)-P-W) derived from Human Estrogen Receptor- beta.
Target	ESR2
Preservatives	Antibody supplied in phosphate buffered saline (without Mg ²⁺ and Ca ²⁺), pH 7.4, 150mM NaCl, 0.02% sodium azide and 50% glycerol.
Form/Appearance	Liquid
Concentration	1 mg/mL
Storage	Store antibody at -20°C for up to one year.
Note	For research use only
Application notes	Western Blot: 1:500~1:1000
Isotype	IgG
Clonality	Polyclonal
MW	59 kDa
Uniprot ID	Q92731
NCBI	NP_001035365.1
Dilution Range	Western Blot: 1:500~1:1000
Expiration Date	12 months from date of receipt.



Western blot analysis of extracts from H...