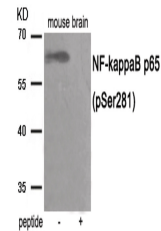


Product Datasheet

RELA Antibody (orb1252894)

| | |
|----------------------------|---|
| Description | RELA Antibody |
| Species/Host | Rabbit |
| Reactivity | Human, Mouse, Rat |
| Conjugation | Unconjugated |
| Tested Applications | WB |
| Immunogen | NF- kappaB p65 (phospho Ser281) antibody was raised against a peptide sequence around phosphorylation site of serine281 (E-L-S (p)-E-P) derived from Human NF- kappaB . |
| Target | RELA |
| Preservatives | Antibody supplied in phosphate buffered saline (without Mg ²⁺ and Ca ²⁺), pH 7.4, 150mM NaCl, 0.02% sodium azide and 50% glycerol. |
| Form/Appearance | Liquid |
| Concentration | 1 mg/mL |
| Storage | Store antibody at -20°C for up to one year. |
| Note | For research use only |
| Application notes | Western Blot: 1:500~1:1000 |
| Isotype | IgG |
| Clonality | Polyclonal |
| MW | 65 kDa |
| Uniprot ID | Q04206 |
| NCBI | NP_001138610.1 |
| Dilution Range | Western Blot: 1:500~1:1000 |
| Expiration Date | 12 months from date of receipt. |



Western blot analysis of extracts from m...