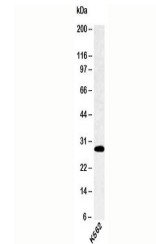


## Product Datasheet

### SPIB Antibody (orb1252888)

<b>Description</b>	SPIB Antibody
<b>Species/Host</b>	Rabbit
<b>Reactivity</b>	Human, Mouse
<b>Conjugation</b>	Unconjugated
<b>Tested Applications</b>	WB
<b>Immunogen</b>	A recombinant protein fragment from the C-terminal half of SPIB was used as the immunogen for this antibody.
<b>Target</b>	SPIB
<b>Preservatives</b>	PBS with 0.1 mg/ml rAlbumin and 0.05% sodium azide
<b>Form/Appearance</b>	Liquid
<b>Concentration</b>	0.5 mg/mL
<b>Storage</b>	Aliquot and Store at -20°C. Avoid freez-thaw cycles.
<b>Note</b>	For research use only
<b>Application notes</b>	Western blot: 4-8 ug/ml Provided assay concentrations are suggestions only, antibody titration may be required for optimal results.
<b>Isotype</b>	IgG
<b>Clonality</b>	Polyclonal
<b>Uniprot ID</b>	<a href="#">Q01892</a>
<b>Dilution Range</b>	Western blot: 4-8 ug/ml Provided assay concentrations are suggestions only, antibody titration may be required for optimal results.
<b>Expiration Date</b>	12 months from date of receipt.



Western blot testing of human samples wi...