
Product Datasheet

BCL2L1 Antibody (orb1252823)

Description

BCL2L1 Antibody

Species/Host

Mouse

Reactivity

Human, Mouse, Porcine, Rat

Conjugation

Unconjugated

Tested

FC, IF, IHC, WB

Applications
Immunogen

Amino acids QSNRELVDFLS (3-14) of the human protein were used as the immunogen for this Bcl-X antibody (2).

Target

BCL2L1

Preservatives

PBS with 0.1 mg/ml rAlbumin and 0.05% sodium azide

Form/Appearance

Liquid

Concentration

0.2 mg/mL

Storage

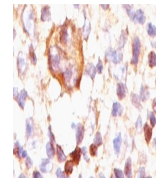
Aliquot and Store at 2-8°C. Avoid freeze-thaw cycles.

Note

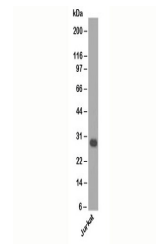
For research use only

Application notes

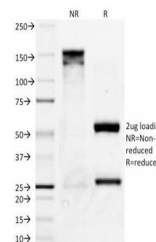
Flow Cytometry: 0.5-1 ug/million cells
 IF: 1-2 ug/ml
 WB: 0.5-1 ug/ml
 IHC (FFPE): 0.5-1 ug/ml for 30 minutes at RT
 (1) Prediluted format : incubate for 30 min at RT
 (3) The concentration stated for each application is a general starting point. Variations in protocols, secondaries and substrates may require the Bcl-X antibody to be titrated up or down for optimal performance.
 1. Staining of formalin-fixed tissues requires boiling tissue sections in 1mM EDTA buffer, pH 7.5-8.5, for 10-20 min followed by cooling at RT for 20 minutes.
 2. This antibody reacts with both BclXS and BclXL.
 3. The prediluted format is supplied in a dropper bottle and is optimized for use in IHC. After epitope retrieval step (if required), drip mAb solution onto the tissue section and incubate at RT for 30 min.



IHC testing of Hodgkin's lymphoma stained...



Western blot testing of human samples.



SDS-PAGE Analysis of Purified, BSA-Free ...

Isotype

IgG2a

Clonality

Monoclonal

Uniprot ID
[Q07817](#)
Dilution Range

Flow Cytometry: 0.5-1 ug/million cells
 IF: 1-2 ug/ml
 WB: 0.5-1 ug/ml
 IHC (FFPE): 0.5-1 ug/ml for 30 minutes at RT
 (1) Prediluted format : incubate for 30 min at RT
 (3) The concentration stated for each application is a general starting point. Variations in protocols, secondaries and substrates may require the Bcl-X antibody to be titrated up or down for optimal performance.
 1. Staining of formalin-fixed tissues requires boiling tissue sections in 1mM EDTA buffer, pH 7.5-8.5, for 10-20 min followed by