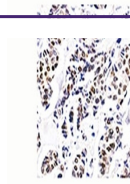


---

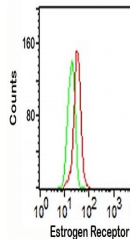
## Product Datasheet

### ESR1 Antibody (orb1252770)

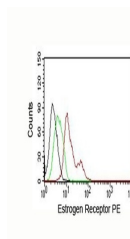
<b>Description</b>	ESR1 Antibody
<b>Species/Host</b>	Mouse
<b>Reactivity</b>	Human
<b>Conjugation</b>	Unconjugated
<b>Tested Applications</b>	FC, IHC, WB
<b>Immunogen</b>	Recombinant human ER alpha protein (aa 2-185) was used as the immunogen.
<b>Target</b>	ESR1
<b>Preservatives</b>	PBS with 0.1 mg/ml rAlbumin and 0.05% sodium azide
<b>Form/Appearance</b>	Liquid
<b>Concentration</b>	0.2 mg/mL
<b>Storage</b>	Aliquot and Store at 2-8°C. Avoid freeze-thaw cycles.
<b>Note</b>	For research use only
<b>Application notes</b>	Western blot: 0.5-1 ug/ml Flow Cytometry: 0.5-1 ug/million cells IHC (Formalin-paraffin): 1-2 ug/ml (1) Variations in protocols, secondaries and substrates may require the ER antibody to be titered for optimal performance. 1. FFPE testing requires boiling tissue sections in 10mM citrate buffer, pH 6.0, for 10-20 min and cooling at RT for 20 minutes.
<b>Isotype</b>	IgG1, kappa
<b>Clonality</b>	Monoclonal
<b>Uniprot ID</b>	<a href="#">P03372</a>
<b>Dilution Range</b>	Western blot: 0.5-1 ug/ml Flow Cytometry: 0.5-1 ug/million cells IHC (Formalin-paraffin): 1-2 ug/ml (1) Variations in protocols, secondaries and substrates may require the ER antibody to be titered for optimal performance. 1. FFPE testing requires boiling tissue sections in 10mM citrate buffer, pH 6.0, for 10-20 min and cooling at RT for 20 minutes.
<b>Expiration Date</b>	12 months from date of receipt.



IHC testing of human breast invasive ductal carcinoma tissue.



Intracellular FACS staining of MCF-7 cells.



FACS testing of human MCF-7 cells: Black = control, red = stained cells.