

## Product Datasheet

### ESR2 Antibody (orb1252769)

**Description**

ESR2 Antibody

**Species/Host**

Mouse

**Reactivity**

Equine, Human, Monkey, Mouse, Porcine, Rat, Sheep

**Conjugation**

Unconjugated

**Tested**

FC, IF, IHC, WB

**Applications**
**Immunogen**

The C-terminus fragment of recombinant human Estrogen Receptor beta protein was used as the immunogen for this antibody.

**Target**

ESR2

**Preservatives**

PBS with 0.1 mg/ml rAlbumin and 0.05% sodium azide

**Form/Appearance**

Liquid

**Concentration**

0.2 mg/mL

**Storage**

Aliquot and Store at 2-8°C. Avoid freeze-thaw cycles.

**Note**

For research use only

**Application notes**

Flow Cytometry: 0.5-1ug/10e6 cells  
IF: 1-2 ug/ml  
WB: 0.5-1 ug/ml  
IHC (FFPE): 0.5-1 ug/ml for 30 minutes at RT (1)  
The concentration stated for each application is a general starting point. Variations in protocols, secondaries and substrates may require the Estrogen Receptor beta antibody to be titrated up or down for optimal performance.  
1. Staining of formalin-fixed tissues requires boiling tissue sections in 10mM citrate buffer, pH 6.0, for 10-20 min followed by cooling at RT for 20 minutes.  
2. The prediluted format is supplied in a dropper bottle and is optimized for use in IHC. After epitope retrieval step (if required), drip mAb solution onto the tissue section and incubate at RT for 30 min.

**Isotype**

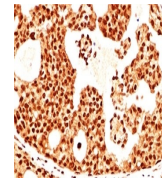
IgG2a

**Clonality**

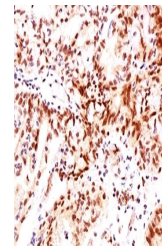
Monoclonal

**Uniprot ID**
[Q92731](#)
**Dilution Range**

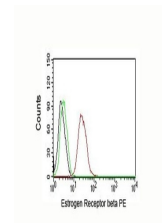
Flow Cytometry: 0.5-1ug/10e6 cells  
IF: 1-2 ug/ml  
WB: 0.5-1 ug/ml  
IHC (FFPE): 0.5-1 ug/ml for 30 minutes at RT (1)  
The concentration stated for each application is a general starting point. Variations in protocols, secondaries and substrates may require the Estrogen Receptor beta antibody to be titrated up or down for optimal performance.  
1. Staining of formalin-fixed tissues requires boiling tissue sections in 10mM citrate buffer, pH 6.0, for 10-20 min followed by cooling at RT for 20 minutes.  
2. The



IHC testing of breast cancer stained with ESR2 antibody



IHC testing of ovarian cancer stained with ESR2 antibody



FACS testing of MCF-7 cells: Black = control, Green = ESR2 antibody