
Product Datasheet

MLANA Antibody (orb1252767)

Description

MLANA Antibody

Species/Host

Mouse

Reactivity

Human, Mouse, Rat

Conjugation

Unconjugated

Tested Applications

ELISA, FC, IF, IHC, IP, WB

Immunogen

Recombinant human Melan-A protein was used as the immunogen for this antibody.

Target

MLANA

Preservatives

PBS with 0.1 mg/ml rAlbumin and 0.05% sodium azide

Form/Appearance

Liquid

Concentration

0.2 mg/mL

Storage

Aliquot and Store at 2-8°C. Avoid freeze-thaw cycles.

Note

For research use only

Application notes

ELISA: order BSA-free format for coating
 Flow Cytometry: 0.5-1 ug/million cells
 IF: 1-2 ug/ml
 WB: 0.5-1 ug/ml
 IP: 0.5-1ug/500ug protein lysate
 IHC (FFPE): 0.5-1 ug/ml for 30 minutes at RT (1) Prediluted format : incubate for 30 min at RT (2) The concentration stated for each application is a general starting point. Variations in protocols, secondaries and substrates may require the Melan-A antibody to be titrated up or down for optimal performance.

1. Staining of formalin-fixed tissues is enhanced by boiling tissue sections in 10mM Citrate Buffer, pH 6.0, for 10-20 min followed by cooling at RT for 20 minutes.
2. The prediluted format is supplied in a dropper bottle and is optimized for use in IHC. After epitope retrieval step (if required), drip mAb solution onto the tissue section and incubate at RT for 30 min.

Isotype

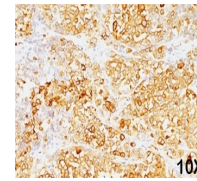
IgG2b, kappa

Clonality

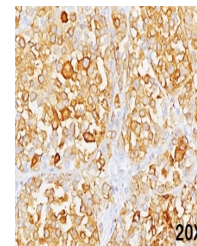
Monoclonal

Uniprot ID
Q16655
Dilution Range

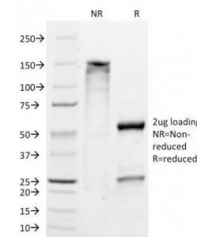
ELISA: order BSA-free format for coating
 Flow Cytometry: 0.5-1 ug/million cells
 IF: 1-2 ug/ml
 WB: 0.5-1 ug/ml
 IP: 0.5-1ug/500ug protein lysate
 IHC (FFPE): 0.5-1 ug/ml for 30 minutes at RT (1) Prediluted format : incubate for 30 min at RT (2) The concentration stated for each application is a general starting point. Variations in protocols, secondaries and substrates may



Formalin/paraffin human melanoma stained...



Formalin/paraffin human melanoma stained...



SDS-PAGE Analysis of Purified, BSA-Free ...