

---

## Product Datasheet

### IGHM Antibody (orb1252753)

**Description**

IGHM Antibody

**Species/Host**

Mouse

**Reactivity**

Human

**Conjugation**

Unconjugated

**Tested Applications**

FC, IF, IHC, WB

**Immunogen**

Recombinant heavy chain of human IgM was used as the immunogen for this antibody.

**Target**

IGHM

**Preservatives**

PBS with 0.1 mg/ml rAlbumin and 0.05% sodium azide

**Form/Appearance**

Liquid

**Concentration**

0.2 mg/mL

**Storage**

Aliquot and Store at 2-8°C. Avoid freeze-thaw cycles.

**Note**

For research use only

**Application notes**

Flow Cytometry: 0.5-1 ug/million cells  
 IF: 0.5-1 ug/ml  
 WB: 0.5-1 ug/ml  
 IHC (Frozen): 0.5-1 ug/ml for 30 minutes at RT  
 (1) Prediluted format : incubate for 30 min at RT  
 (2) The concentration stated for each application is a general starting point. Variations in protocols, secondaries and substrates may require the antibody to be titered up or down for optimal performance.  
 1. Staining of formalin-fixed tissues requires boiling tissue sections in 10mM citrate buffer, pH 6.0, for 10-20 min followed by cooling at RT for 20 minutes.  
 2. The prediluted format is supplied in a dropper bottle and is optimized for use in IHC. After epitope retrieval step (if required), drip mAb solution onto the tissue section and incubate at RT for 30 min.

**Isotype**

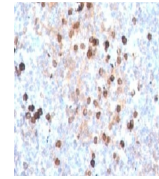
IgG1, kappa

**Clonality**

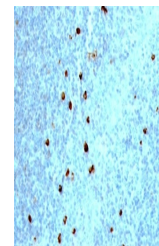
Monoclonal

**Uniprot ID**
**P01871**
**Dilution Range**

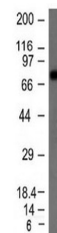
Flow Cytometry: 0.5-1 ug/million cells  
 IF: 0.5-1 ug/ml  
 WB: 0.5-1 ug/ml  
 IHC (Frozen): 0.5-1 ug/ml for 30 minutes at RT  
 (1) Prediluted format : incubate for 30 min at RT  
 (2) The concentration stated for each application is a general starting point. Variations in protocols, secondaries and substrates may require the antibody to be titered up or down for optimal performance.  
 1. Staining of formalin-fixed tissues requires boiling tissue sections in 10mM citrate buffer, pH 6.0, for 10-20 min followed by cooling at RT for 20 minutes.  
 2. The prediluted format is supplied in a



IHC testing of human tonsil stained with...



IHC testing of human tonsil stained with...



Western blot testing of Raji cell lysate...