
Product Datasheet

MUC5AC Antibody (orb1252729)

Description

MUC5AC Antibody

Species/Host

Mouse

Reactivity

Feline, Gallus, Human, Mammal, Monkey, Mouse, Porcine, Rabbit, Rat

Conjugation

Unconjugated

Tested Applications

FC, IF, IHC

Immunogen

M1 mucin preparation from the fluid of an ovarian mucinous cyst belonging to an O Le(a-b) patient was used as the immunogen for this MUC5AC antibody.

Target

MUC5AC

Preservatives

PBS with 0.1 mg/ml rAlbumin and 0.05% sodium azide

Form/Appearance

Liquid

Concentration

0.2 mg/mL

Storage

Aliquot and Store at 2-8°C. Avoid freeze-thaw cycles.

Note

For research use only

Application notes

Flow Cytometry: 0.5-1 ug/million cells
 IF: 1-2 ug/ml
 IHC (FFPE): 0.5-1 ug/ml for 30 minutes at RT (1)
 Prediluted format : incubate for 30 min at RT (2)
 The concentration stated for each application is a general starting point. Variations in protocols, secondaries and substrates may require the MUC5AC antibody to be titered up or down for optimal performance.

1. Staining of formalin-fixed tissues requires boiling tissue sections in 10mM citrate buffer, pH 6.0, for 10-20 min followed by cooling at RT for 20 minutes.

2. The prediluted format is supplied in a dropper bottle and is optimized for use in IHC. After epitope retrieval step (if required), drip mAb solution onto the tissue section and incubate at RT for 30 min.

Isotype

IgG1, kappa

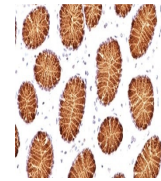
Clonality

Monoclonal

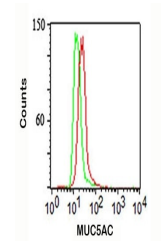
Uniprot ID
P98088
Dilution Range

Flow Cytometry: 0.5-1 ug/million cells
 IF: 1-2 ug/ml
 IHC (FFPE): 0.5-1 ug/ml for 30 minutes at RT (1)
 Prediluted format : incubate for 30 min at RT (2)
 The concentration stated for each application is a general starting point. Variations in protocols, secondaries and substrates may require the MUC5AC antibody to be titered up or down for optimal performance.

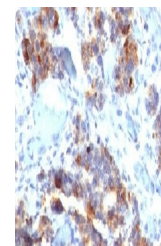
1. Staining of formalin-fixed tissues requires boiling tissue sections in 10mM citrate buffer, pH



IHC testing of human stomach stained wit...



Intracellular flow cytometry staining of...



IHC testing of human gastric carcinoma S...