
Product Datasheet

ODC1 Antibody (orb1252723)

Description

ODC1 Antibody

Species/Host

Mouse

Reactivity

Human, Rat

Conjugation

Unconjugated

Tested

FC, IF, IHC, WB

Applications
Immunogen

Recombinant human ODC-1 protein was used as the immunogen for this antibody.

Target

ODC1

Preservatives

PBS with 0.1 mg/ml rAlbumin and 0.05% sodium azide

Form/Appearance

Liquid

Concentration

0.2 mg/mL

Storage

Aliquot and Store at 2-8°C. Avoid freeze-thaw cycles.

Note

For research use only

Application notes

Flow Cytometry: 0.5-1 ug/million cells
 IF: 0.5-1 ug/ml
 WB: 0.5-1 ug/ml
 IHC (FFPE): 0.5-1 ug/ml for 30 minutes at RT
 (1) Prediluted format : incubate for 30 min at RT
 (2) The concentration stated for each application is a general starting point. Variations in protocols, secondaries and substrates may require the antibody to be titered up or down for optimal performance.
 1. Staining of formalin-fixed tissues requires boiling tissue sections in 10mM citrate buffer, pH 6.0, for 10-20 min followed by cooling at RT for 20 minutes.
 2. The prediluted format is supplied in a dropper bottle and is optimized for use in IHC. After epitope retrieval step (if required), drip mAb solution onto the tissue section and incubate at RT for 30 min.

Isotype

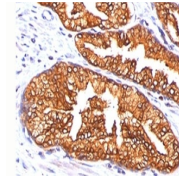
IgG1, kappa

Clonality

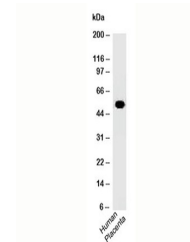
Monoclonal

Uniprot ID
[P11926](#)
Dilution Range

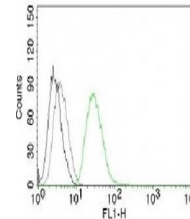
Flow Cytometry: 0.5-1 ug/million cells
 IF: 0.5-1 ug/ml
 WB: 0.5-1 ug/ml
 IHC (FFPE): 0.5-1 ug/ml for 30 minutes at RT
 (1) Prediluted format : incubate for 30 min at RT
 (2) The concentration stated for each application is a general starting point. Variations in protocols, secondaries and substrates may require the antibody to be titered up or down for optimal performance.
 1. Staining of formalin-fixed tissues requires boiling tissue sections in 10mM citrate buffer, pH 6.0, for 10-20 min followed by cooling at RT for 20 minutes.
 2. The prediluted format is supplied



Formalin/paraffin human prostate carcino...



Western blot testing of human samples us...



Flow analysis of permeabilized PC3 cells ...