

---

## Product Datasheet

### PMEL Antibody (orb1252706)

**Description**

PMEL Antibody

**Species/Host**

Mouse

**Reactivity**

Human

**Conjugation**

Unconjugated

**Tested**

FC, IF, IHC, WB

**Applications**
**Immunogen**

The extract of pigmented melanoma metastases from lymph nodes was used as the immunogen for this gp100 antibody.

**Target**

PMEL

**Preservatives**

PBS with 0.1 mg/ml rAlbumin and 0.05% sodium azide

**Form/Appearance**

Liquid

**Concentration**

0.2 mg/mL

**Storage**

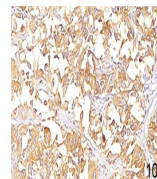
Aliquot and Store at 2-8°C. Avoid freeze-thaw cycles.

**Note**

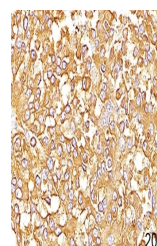
For research use only

**Application notes**

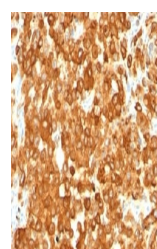
Western Blot: 1-2 ug/ml  
Flow Cytometry: 0.5-1 ug/million cells  
IF: 0.5-1 ug/ml  
IHC (FFPE): 0.5-1.0 ug/ml for 30 minutes at RT (1)  
Prediluted format : incubate for 30 min at RT (2)  
The concentration stated for each application is a general starting point. Variations in protocols, secondaries and substrates may require the gp100 antibody to be titered up or down for optimal performance.  
1. Staining of formalin-fixed tissues requires boiling tissue sections in 10mM citrate buffer, pH 6.0, for 10-20 min followed by cooling at RT for 20 minutes.  
2. The prediluted format is supplied in a dropper bottle and is optimized for use in IHC. After epitope retrieval step (if required), drip mAb solution onto the tissue section and incubate at RT for 30 min.



IHC staining of human melanoma (10X) wit...



IHC staining of human melanoma (20X) wit...



IHC staining of human melanoma with gp10...

**Isotype**

IgG1, kappa

**Clonality**

Monoclonal

**Uniprot ID**
**P40967**
**Dilution Range**

Western Blot: 1-2 ug/ml  
Flow Cytometry: 0.5-1 ug/million cells  
IF: 0.5-1 ug/ml  
IHC (FFPE): 0.5-1.0 ug/ml for 30 minutes at RT (1)  
Prediluted format : incubate for 30 min at RT (2)  
The concentration stated for each application is a general starting point. Variations in protocols, secondaries and substrates may require the gp100 antibody to be titered up or down for optimal performance.  
1. Staining of formalin-fixed tissues requires boiling tissue sections in