

Product Datasheet

TFF1 Antibody (orb1252701)

Description

TFF1 Antibody

Species/Host

Mouse

Reactivity

Human, Primate

Conjugation

Unconjugated

Tested Applications

FC, IF, IHC, WB

Immunogen

Amino acids CFDDTVRGVPWCYPNTIDVPPEEECEF (57-84) from the C-terminus of human Estrogen inducible protein pS2 was used as the immunogen for this antibody.

Target

TFF1

Preservatives

PBS with 0.1 mg/ml rAlbumin and 0.05% sodium azide

Form/Appearance

Liquid

Concentration

0.2 mg/mL

Storage

Aliquot and Store at 2-8°C. Avoid freeze-thaw cycles.

Note

For research use only

Application notes

Flow Cytometry: 0.5-1 ug/million cells
 IF: 0.5-1 ug/ml
 IHC (FFPE): 0.5-1.0 ug/ml for 30 minutes at RT
 (1) Prediluted format : incubate for 30 min at RT
 (2) The concentration stated for each application is a general starting point. Variations in protocols, secondaries and substrates may require the antibody to be titered up or down for optimal performance.
 1. Staining of FFPE tissues REQUIRES digestion with Pronase E at 1mg/ml in PBS for 15 min at 37°C. Heat Induced Epitope Retrieval is not suitable for this antibody.
 2. The prediluted format is supplied in a dropper bottle and is optimized for use in IHC. After epitope retrieval step (if required), drip mAb solution onto the tissue section and incubate at RT for 30 min.

Isotype

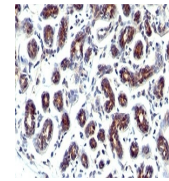
IgG1, kappa

Clonality

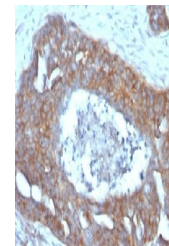
Monoclonal

Uniprot ID
P04155
Dilution Range

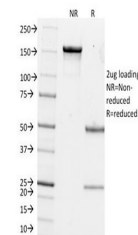
Flow Cytometry: 0.5-1 ug/million cells
 IF: 0.5-1 ug/ml
 IHC (FFPE): 0.5-1.0 ug/ml for 30 minutes at RT
 (1) Prediluted format : incubate for 30 min at RT
 (2) The concentration stated for each application is a general starting point. Variations in protocols, secondaries and substrates may require the antibody to be titered up or down for optimal performance.
 1. Staining of FFPE tissues REQUIRES digestion with Pronase E at 1mg/ml in PBS for 15 min at 37°C. Heat Induced Epitope Retrieval is not suitable for this antibody.
 2.



IHC staining of human breast cancer with...



IHC testing of FFPE human ovarian carcin...



SDS-PAGE Analysis of Purified, BSA-Free ...