
Product Datasheet

BrdU Antibody [BRD469] (orb1252671)

Description

BrdU Antibody [BRD469]

Species/Host

Mouse

Reactivity

All

Conjugation

Unconjugated

Tested Applications

FC, IF, IHC

Immunogen

Bromodeoxyuridine conjugated to KLH was used as the immunogen.

Preservatives

PBS with 0.1 mg/ml rAlbumin and 0.05% sodium azide

Form/Appearance

Liquid

Concentration

0.2 mg/mL

Storage

Aliquot and Store at 2-8°C. Avoid freeze-thaw cycles.

Note

For research use only

Application notes

Flow Cytometry: 0.5-1 ug/million cells
IF: 0.5-1 ug/ml
IHC (FFPE): 0.5-1 ug/ml for 30 minutes at RT
(1)The concentration stated for each application is a general starting point. Variations in protocols, secondaries and substrates may require the Bromodeoxyuridine antibody to be titered up or down for optimal performance.
1. For staining of formalin-fixed tissues, incubate sections in 4N HCl for 30 minutes at RT followed by digestion with trypsin at 1mg/ml PBS, 10 min at 37°C.

Isotype

IgG1

Clonality

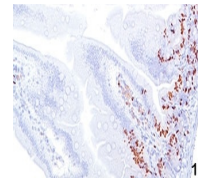
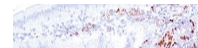
Monoclonal

Dilution Range

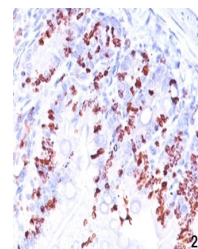
Flow Cytometry: 0.5-1 ug/million cells
IF: 0.5-1 ug/ml
IHC (FFPE): 0.5-1 ug/ml for 30 minutes at RT
(1)The concentration stated for each application is a general starting point. Variations in protocols, secondaries and substrates may require the Bromodeoxyuridine antibody to be titered up or down for optimal performance.
1. For staining of formalin-fixed tissues, incubate sections in 4N HCl for 30 minutes at RT followed by digestion with trypsin at 1mg/ml PBS, 10 min at 37°C.

Expiration Date

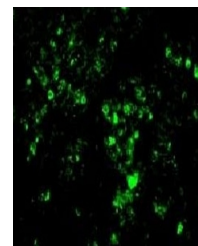
12 months from date of receipt.



IHC staining of mouse intestine tissue (...)



IHC staining of mouse intestine tissue (...)



Immunofluorescence testing of rat kidney...