

Product Datasheet

Nucleoli Marker Antibody [NM95] (orb1252651)

Description

Nucleoli Marker Antibody [NM95]

Species/Host

Mouse

Reactivity

Human

Conjugation

Unconjugated

Tested

FC, ICC, IF, IHC

Applications

Immunogen

Nuclei of myeloid leukemia biopsy cells were used as the immunogen.

Preservatives

PBS with 0.1 mg/ml rAlbumin and 0.05% sodium azide

Form/Appearance

Liquid

Concentration

0.2 mg/mL

Storage

Aliquot and Store at 2-8°C. Avoid freeze-thaw cycles.

Note

For research use only

Application notes

Flow Cytometry: 0.5-1ug/10⁶ cellsIF: 0.5-1 ug/mlImmunocytochemistry (Acetone-fixed): 0.5-1 ug/ml for 30 min at RTIHC (Formalin-paraffin): 0.5-1 ug/ml for 30 min at RT (1)Prediluted format : incubate for 30 min at RT (2)The concentration stated for each application is a general starting point. Variations in protocols, secondaries and substrates may require the Nucleoli marker antibody to be titrated up or down for optimal performance.1. Staining of formalin-fixed tissues is enhanced by boiling tissue sections in 10mM Citrate Buffer, pH 6.0, for 10-20 min followed by cooling at RT for 20 minutes.2. The prediluted format is supplied in a dropper bottle and is optimized for use in IHC. After epitope retrieval step (if required), drip mAb solution onto the tissue section and incubate at RT for 30 min.

Isotype

IgG1, kappa

Clonality

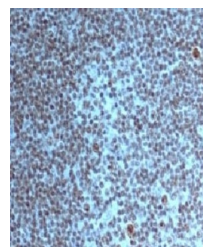
Monoclonal

Dilution Range

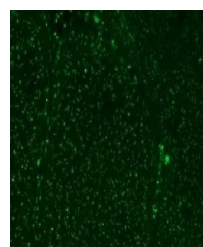
Flow Cytometry: 0.5-1ug/10⁶ cellsIF: 0.5-1 ug/mlImmunocytochemistry (Acetone-fixed): 0.5-1 ug/ml for 30 min at RTIHC (Formalin-paraffin): 0.5-1 ug/ml for 30 min at RT (1)Prediluted format : incubate for 30 min at RT (2)The concentration stated for each application is a general starting point. Variations in protocols, secondaries and substrates may require the Nucleoli marker antibody to be titrated up or down for optimal



IHC staining of
FFPE human skin
with Nuc...



IHC staining of
FFPE human tonsil
tissue...



Immunofluorescent
testing of colon
carci...