
Product Datasheet

CNN1 Antibody (orb1252576)

Description

CNN1 Antibody

Species/Host

Mouse

Reactivity

Human, Rat

Conjugation

Unconjugated

Tested Applications

FC, IF, IHC-P

Immunogen

Recombinant human protein was used as the immunogen for the anti-Calponin antibody.

Target

CNN1

Preservatives

PBS with 0.1 mg/ml rAlbumin and 0.05% sodium azide

Form/Appearance

Liquid

Concentration

0.2 mg/mL

Storage

Aliquot and Store at 2-8°C. Avoid freeze-thaw cycles.

Note

For research use only

Application notes

Flow Cytometry: 0.5-1 ug/million cells in 0.1ml
 Immunofluorescence: 1-2 ug/ml
 Immunohistochemistry (FFPE): 0.5-1 ug/ml for 30 min at RT (1)
 Prediluted format : incubate for 30 min at RT (2)
 Optimal dilution of the anti-Calponin antibody should be determined by the researcher.
 1. Staining of formalin-fixed tissues requires boiling tissue sections in 10mM Tris with 1mM EDTA, pH 9.0, for 10-20 min followed by cooling at RT for 20 min
 2. The prediluted format is supplied in a dropper bottle and is optimized for use in IHC. After epitope retrieval step (if required), drip mAb solution onto the tissue section and incubate at RT for 30 min.

Isotype

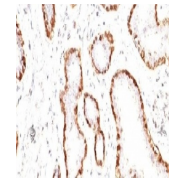
IgG1, kappa

Clonality

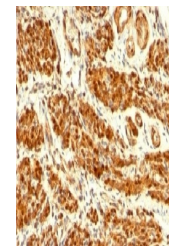
Monoclonal

Uniprot ID
P51911
Dilution Range

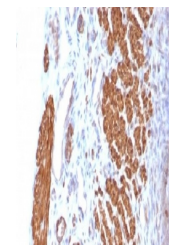
Flow Cytometry: 0.5-1 ug/million cells in 0.1ml
 Immunofluorescence: 1-2 ug/ml
 Immunohistochemistry (FFPE): 0.5-1 ug/ml for 30 min at RT (1)
 Prediluted format : incubate for 30 min at RT (2)
 Optimal dilution of the anti-Calponin antibody should be determined by the researcher.
 1. Staining of formalin-fixed tissues requires boiling tissue sections in 10mM Tris with 1mM EDTA, pH 9.0, for 10-20 min followed by cooling at RT for 20 min
 2. The prediluted format is supplied in a dropper bottle and is optimized for use in IHC. After epitope retrieval step (if required), drip mAb solution onto the tissue section and



Formalin-fixed, paraffin-embedded human ...



Formalin-fixed, paraffin-embedded human ...



Formalin-fixed, paraffin-embedded rat ut...