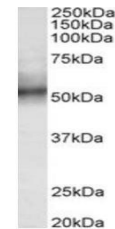


Product Datasheet

TRIM11 antibody (orb125256)

Description	Goat polyclonal antibody to TRIM11
Species/Host	Goat
Reactivity	Bovine, Human, Porcine
Conjugation	Unconjugated
Tested Applications	ELISA, IHC, WB
Target	TRIM11 (aa249-263)
Preservatives	Supplied at 0.5 mg/ml in Tris saline, 0.02% sodium azide, pH 7.3 with 0.5% bovine serum albumin. Aliquot and store at -20°C. Minimize freezing and thawing.
Storage	Aliquot and store at -20°C. Minimize freezing and thawing.
Note	For research use only
Application notes	WB: Approx 52kDa band observed in Human Spleen lysates (calculated MW of 52.8kDa according to NP_660215.1). Recommended concentration: 0.3-1µg/ml. Primary incubation was 1 hour.. IHC: Paraffin embedded Human Skeletal Muscle. Recommended concentration: 5µg/ml.
Protein Sequence	DALRRVQDVKLQPPE
Clonality	Polyclonal
MW	52.8
Entrez	81559
Dilution Range	ELISA: 1:32000, WB: 0.3-1 µg/ml, IHC-P: 5 µg/ml
Expiration Date	12 months from date of receipt.



Western blot analysis of Human Spleen ly...