
Product Datasheet

GLG1 Antibody (orb1252545)

Description

GLG1 Antibody

Species/Host

Mouse

Reactivity

Human

Conjugation

Unconjugated

Tested Applications

FC, ICC, IF, IHC-P, WB

Immunogen

The Golgi fraction from human liver cells was used as the immunogen for the Golgi Marker antibody.

Target

GLG1

Preservatives

PBS with 0.1 mg/ml rAlbumin and 0.05% sodium azide

Form/Appearance

Liquid

Concentration

0.2 mg/mL

Storage

Aliquot and Store at 2-8°C. Avoid freez-thaw cycles.

Note

For research use only

Application notes

Flow Cytometry: 0.5-1 ug/million cells in 0.1ml
 Immunofluorescence: 0.5-1 ug/ml
 Immunocytochemistry (Acetone or paraformaldehyde fixed): 0.5-1 ug/ml for 30 min
 Western blot: 0.5-1.0 ug/ml
 Immunohistochemistry (FFPE): 0.5-1 ug/ml for 30 min at RT
 (1) Prediluted format : incubate for 30 min at RT
 (2) Optimal dilution of the Golgi Marker antibody should be determined by the researcher.
 1. Staining of formalin-fixed tissues requires boiling tissue sections in 10mM Citrate buffer, pH 6.0, for 10-20 min followed by cooling at RT for 20 minutes
 2. The prediluted format is supplied in a dropper bottle and is optimized for use in IHC. After epitope retrieval step (if required), drip mAb solution onto the tissue section and incubate at RT for 30 min.

Isotype

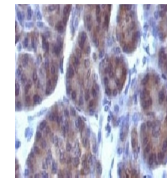
IgG1, kappa

Clonality

Monoclonal

Uniprot ID
[Q92896](#)
Dilution Range

Flow Cytometry: 0.5-1 ug/million cells in 0.1ml
 Immunofluorescence: 0.5-1 ug/ml
 Immunocytochemistry (Acetone or paraformaldehyde fixed): 0.5-1 ug/ml for 30 min
 Western blot: 0.5-1.0 ug/ml
 Immunohistochemistry (FFPE): 0.5-1 ug/ml for 30 min at RT
 (1) Prediluted format : incubate for 30 min at RT
 (2) Optimal dilution of the Golgi Marker antibody should be determined by the researcher.
 1. Staining of formalin-fixed tissues requires boiling tissue sections in 10mM Citrate



Formalin-fixed, paraffin-embedded human ...