

---

## Product Datasheet

### GYPA Antibody (orb1252536)

**Description**

GYPA Antibody

**Species/Host**

Mouse

**Reactivity**

Human

**Conjugation**

Unconjugated

**Tested Applications**

FC, IF, IHC-P, WB

**Immunogen**

Recombinant human GPA protein was used as the immunogen for the Glycophorin A antibody.

**Target**

GYPA

**Preservatives**

PBS with 0.1 mg/ml rAlbumin and 0.05% sodium azide

**Form/Appearance**

Liquid

**Concentration**

0.2 mg/mL

**Storage**

Aliquot and Store at 2-8°C. Avoid freeze-thaw cycles.

**Note**

For research use only

**Application notes**

Flow Cytometry: 0.5-1 ug/million cells in 0.1ml  
 Immunofluorescence: 0.5-1 ug/ml  
 Immunohistochemistry (FFPE): 0.25-0.5 ug/ml for 30 min at RT (1)Prediluted format : incubate for 30 min at RT (2)Optimal dilution of the Glycophorin A antibody should be determined by the researcher.1. Staining of formalin-fixed tissues requires boiling tissue sections in 10mM Citrate buffer, pH 6.0, for 10-20 min followed by cooling at RT for 20 minutes2. The prediluted format is supplied in a dropper bottle and is optimized for use in IHC. After epitope retrieval step (if required), drip mAb solution onto the tissue section and incubate at RT for 30 min.

**Isotype**

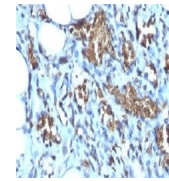
IgG1, kappa

**Clonality**

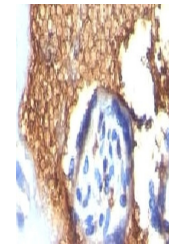
Monoclonal

**Uniprot ID**
[P02724](#)
**Dilution Range**

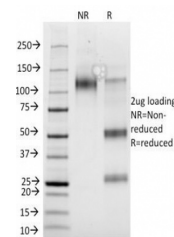
Flow Cytometry: 0.5-1 ug/million cells in 0.1ml  
 Immunofluorescence: 0.5-1 ug/ml  
 Immunohistochemistry (FFPE): 0.25-0.5 ug/ml for 30 min at RT (1)Prediluted format : incubate for 30 min at RT (2)Optimal dilution of the Glycophorin A antibody should be determined by the researcher.1. Staining of formalin-fixed tissues requires boiling tissue sections in 10mM Citrate buffer, pH 6.0, for 10-20 min followed by cooling at RT for 20 minutes2. The prediluted format is supplied in a dropper bottle and is optimized for use in IHC. After epitope retrieval step (if required), drip mAb solution onto the tissue section



Formalin-fixed, paraffin-embedded human ...



Formalin-fixed, paraffin-embedded human ...



SDS-PAGE Analysis of Purified, BSA-Free ...