
Product Datasheet

MFGE8 Antibody (orb1252493)

Description

MFGE8 Antibody

Species/Host

Mouse

Reactivity

Canine, Human

Conjugation

Unconjugated

Tested Applications

FC, IF, IHC-P, WB

Immunogen

A human milk fat globule membrane preparation was used as the immunogen for the MFGE8 antibody.

Target

MFGE8

Preservatives

PBS with 0.1 mg/ml rAlbumin and 0.05% sodium azide

Form/Appearance

Liquid

Concentration

0.2 mg/mL

Storage

Aliquot and Store at 2-8°C. Avoid freeze-thaw cycles.

Note

For research use only

Application notes

Western blot: 1-2 ug/ml
 Flow Cytometry: 0.5-1 ug/million cells in 0.1ml
 Immunofluorescence: 0.5-1 ug/ml
 Immunohistochemistry (FFPE): 0.5-1 ug/ml for 30 min at RT
 (1) Prediluted format : incubate for 30 min at RT
 (2) Optimal dilution of the MFGE8 antibody should be determined by the researcher.
 1. Staining of formalin-fixed tissues requires boiling tissue sections in 10mM Citrate buffer, pH 6.0, for 10-20 min followed by cooling at RT for 20 minutes
 2. The prediluted format is supplied in a dropper bottle and is optimized for use in IHC. After epitope retrieval step (if required), drip mAb solution onto the tissue section and incubate at RT for 30 min.

Isotype

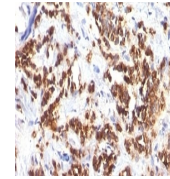
IgG1, kappa

Clonality

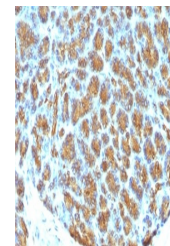
Monoclonal

Uniprot ID
[Q08431](#)
Dilution Range

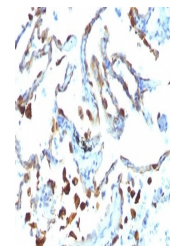
Western blot: 1-2 ug/ml
 Flow Cytometry: 0.5-1 ug/million cells in 0.1ml
 Immunofluorescence: 0.5-1 ug/ml
 Immunohistochemistry (FFPE): 0.5-1 ug/ml for 30 min at RT
 (1) Prediluted format : incubate for 30 min at RT
 (2) Optimal dilution of the MFGE8 antibody should be determined by the researcher.
 1. Staining of formalin-fixed tissues requires boiling tissue sections in 10mM Citrate buffer, pH 6.0, for 10-20 min followed by cooling at RT for 20 minutes
 2. The prediluted format is supplied in a dropper bottle and is optimized for use in IHC. After epitope retrieval step (if required), drip mAb solution onto the tissue section



Formalin-fixed, paraffin-embedded human ...



FFPE human pancreas tested with MFGE8 an...



FFPE human lung carcinoma tested with MF...