

---

## Product Datasheet

### MUC3A Antibody (orb1252484)

**Description**

MUC3A Antibody

**Species/Host**

Mouse

**Reactivity**

Human

**Conjugation**

Unconjugated

**Tested Applications**

FC, IF, IHC-P

**Immunogen**

Amino acids (C-HSTPSFTSSITTTETTSHTPSFTSSITTTETTS) which contains two of the MUC3 tandem repeats was used as the immunogen for the MUC3 antibody.

**Target**

MUC3A

**Preservatives**

PBS with 0.1 mg/ml rAlbumin and 0.05% sodium azide

**Form/Appearance**

Liquid

**Concentration**

0.2 mg/mL

**Storage**

Aliquot and Store at 2-8°C. Avoid freeze-thaw cycles.

**Note**

For research use only

**Application notes**

Flow Cytometry: 0.5-1 ug/million cells in 0.1ml  
 Immunofluorescence: 1-2 ug/ml  
 Immunohistochemistry (FFPE): 0.5-1 ug/ml for 30 min at RT (1) Prediluted format : incubate for 30 min at RT (2) Optimal dilution of the MUC3 antibody should be determined by the researcher. 1. Staining of formalin-fixed tissues requires boiling tissue sections in 10mM Citrate buffer, pH 6.0, for 10-20 min followed by cooling at RT for 20 min 2. The prediluted format is supplied in a dropper bottle and is optimized for use in IHC. After epitope retrieval step (if required), drip mAb solution onto the tissue section and incubate at RT for 30 min.

**Isotype**

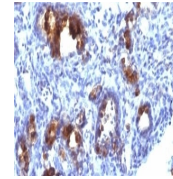
IgG2a, kappa

**Clonality**

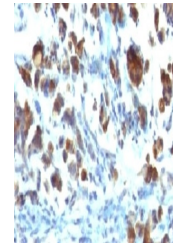
Monoclonal

**Uniprot ID**
**Q02505**
**Dilution Range**

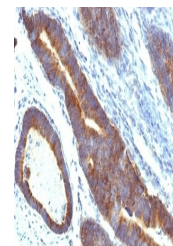
Flow Cytometry: 0.5-1 ug/million cells in 0.1ml  
 Immunofluorescence: 1-2 ug/ml  
 Immunohistochemistry (FFPE): 0.5-1 ug/ml for 30 min at RT (1) Prediluted format : incubate for 30 min at RT (2) Optimal dilution of the MUC3 antibody should be determined by the researcher. 1. Staining of formalin-fixed tissues requires boiling tissue sections in 10mM Citrate buffer, pH 6.0, for 10-20 min followed by cooling at RT for 20 min 2. The prediluted format is supplied in a dropper bottle and is optimized for use in IHC. After epitope retrieval step (if required), drip mAb solution onto the tissue section and incubate at RT for 30 min.



Formalin-fixed, paraffin-embedded human ...



Formalin-fixed, paraffin-embedded human ...



Formalin-fixed, paraffin-embedded human ...