
Product Datasheet

B2M Antibody (orb1252471)

Description

B2M Antibody

Species/Host

Mouse

Reactivity

Human, Primate

Conjugation

Unconjugated

Tested

FC, IF, IHC-P

Applications
Immunogen

Full length recombinant human protein was used as the immunogen for the Beta-2 Microglobulin antibody.

Target

B2M

Preservatives

PBS with 0.1 mg/ml rAlbumin and 0.05% sodium azide

Form/Appearance

Liquid

Concentration

0.2 mg/mL

Storage

Aliquot and Store at 2-8°C. Avoid freeze-thaw cycles.

Note

For research use only

Application notes

Flow Cytometry: 0.5-1 ug/million cells in 0.1ml
 Immunofluorescence: 0.5-1 ug/ml
 Immunohistochemistry (FFPE): 0.5-1 ug/ml for 30 min at RT
 (1)Prediluted format: incubate for 30 min at RT
 (2)Optimal dilution of the Beta-2 Microglobulin antibody should be determined by the researcher.
 1. Staining of formalin/paraffin tissues requires boiling tissue sections in 10mM Citrate buffer, pH 6.0, for 10-20 min followed by cooling at RT for 20 min.
 2. The prediluted format is supplied in a dropper bottle and is optimized for use in IHC. After epitope retrieval step (if required), drip mAb solution onto the tissue section and incubate at RT for 30 min.

Isotype

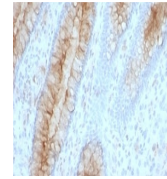
IgG2b, kappa

Clonality

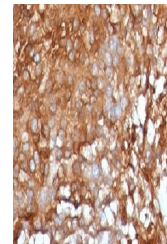
Monoclonal

Uniprot ID
P61769
Dilution Range

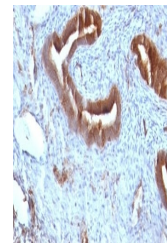
Flow Cytometry: 0.5-1 ug/million cells in 0.1ml
 Immunofluorescence: 0.5-1 ug/ml
 Immunohistochemistry (FFPE): 0.5-1 ug/ml for 30 min at RT
 (1)Prediluted format: incubate for 30 min at RT
 (2)Optimal dilution of the Beta-2 Microglobulin antibody should be determined by the researcher.
 1. Staining of formalin/paraffin tissues requires boiling tissue sections in 10mM Citrate buffer, pH 6.0, for 10-20 min followed by cooling at RT for 20 min.
 2. The prediluted format is supplied in a dropper bottle and is optimized for use in IHC. After epitope retrieval step (if required), drip mAb solution onto



Formalin-fixed, paraffin-embedded human ...



Formalin-fixed, paraffin-embedded human ...



Formalin-fixed, paraffin-embedded human ...