

---

## Product Datasheet

### NKX2-1 Antibody (orb1252460)

**Description**

NKX2-1 Antibody

**Species/Host**

Mouse

**Reactivity**

Human, Mouse, Rat

**Conjugation**

Unconjugated

**Tested Applications**

FC, IF, IHC-P

**Immunogen**

Recombinant protein was used as the immunogen for the TTF1 antibody.

**Target**

NKX2-1

**Preservatives**

PBS with 0.1 mg/ml rAlbumin and 0.05% sodium azide

**Form/Appearance**

Liquid

**Concentration**

0.2 mg/mL

**Storage**

Aliquot and Store at 2-8°C. Avoid freeze-thaw cycles.

**Note**

For research use only

**Application notes**

Flow Cytometry: 0.5-1 ug/million cells in 0.1ml  
 Immunofluorescence: 0.5-1 ug/ml  
 Immunohistochemistry (FFPE): 0.5-1 ug/ml for 30 min at RT  
 (1) Prediluted format: incubate for 30 min at RT  
 (2) Optimal dilution of the TTF1 antibody should be determined by the researcher.  
 1. Staining of formalin/paraffin tissues requires boiling tissue sections in 10mM Citrate buffer, pH 6.0, for 10-20 min followed by cooling at RT for 20 min.  
 2. The prediluted format is supplied in a dropper bottle and is optimized for use in IHC. After epitope retrieval step (if required), drip mAb solution onto the tissue section and incubate at RT for 30 min.

**Isotype**

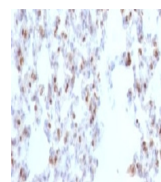
IgG1, kappa

**Clonality**

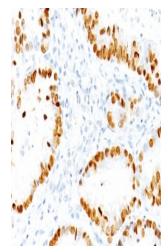
Monoclonal

**Uniprot ID**
**P43699**
**Dilution Range**

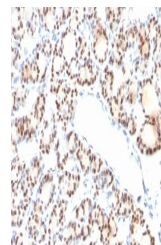
Flow Cytometry: 0.5-1 ug/million cells in 0.1ml  
 Immunofluorescence: 0.5-1 ug/ml  
 Immunohistochemistry (FFPE): 0.5-1 ug/ml for 30 min at RT  
 (1) Prediluted format: incubate for 30 min at RT  
 (2) Optimal dilution of the TTF1 antibody should be determined by the researcher.  
 1. Staining of formalin/paraffin tissues requires boiling tissue sections in 10mM Citrate buffer, pH 6.0, for 10-20 min followed by cooling at RT for 20 min.  
 2. The prediluted format is supplied in a dropper bottle and is optimized for use in IHC. After epitope retrieval step (if required), drip mAb solution onto



Formalin-fixed, paraffin-embedded rat lu...



Formalin-fixed, paraffin-embedded human ...



Formalin-fixed, paraffin-embedded human ...