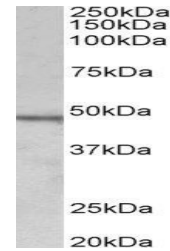


Product Datasheet

CHIT1 antibody (orb125246)

Description	Goat polyclonal antibody to CHIT1
Species/Host	Goat
Reactivity	Human
Conjugation	Unconjugated
Tested Applications	ELISA, WB
Target	CHIT1 (aa409-423)
Preservatives	Supplied at 0.5 mg/ml in Tris saline, 0.02% sodium azide, pH 7.3 with 0.5% bovine serum albumin. Aliquot and store at -20°C. Minimize freezing and thawing.
Storage	Aliquot and store at -20°C. Minimize freezing and thawing.
Note	For research use only
Application notes	WB: Approx 48kDa band observed in lysates of cell line Daudi (calculated MW of 51.7kDa according to NP_003456.1). Recommended concentration: 1-3µg/ml.
Protein Sequence	EHGPSPGQDTFCQGK
Clonality	Polyclonal
MW	51.7
Entrez	1118
Dilution Range	ELISA: 1:2000, WB: 1-3 µg/ml
Expiration Date	12 months from date of receipt.



WB analysis of staining of Daudi lysate

...