
Product Datasheet

KRT76 Antibody (orb1252385)

Description

KRT76 Antibody

Species/Host

Mouse

Reactivity

Human, Rat

Conjugation

Unconjugated

Tested Applications

ELISA, FC, IF, IHC-P, WB

Immunogen

Recombinant human KRT76 protein was used as the immunogen for the Basic Cytokeratin antibody.

Target

KRT76

Preservatives

PBS with 0.1 mg/ml rAlbumin and 0.05% sodium azide

Form/Appearance

Liquid

Concentration

0.2 mg/mL

Storage

Aliquot and Store at 2-8°C. Avoid freeze-thaw cycles.

Note

For research use only

Application notes

ELISA (For coating order Ab without BSA)Flow Cytometry: 0.5-1 ug/million cells in 0.1mlImmunofluorescence: 1-2 ug/mlWestern blot: 0.5-1 ug/mlImmunohistochemistry (FFPE): 0.25-0.5 ug/ml for 30 min at RT (1)Prediluted format: incubate for 30 min at RT (2)Optimal dilution of the Basic Cytokeratin antibody should be determined by the researcher.1. Staining of formalin-fixed tissues requires boiling tissue sections in 10mM Citrate buffer, pH 6.0, for 10-20 min followed by cooling at RT for 20 min.2. The prediluted format is supplied in a dropper bottle and is optimized for use in IHC. After epitope retrieval step (if required), drip mAb solution onto the tissue section and incubate at RT for 30 min.

Isotype

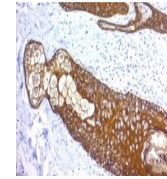
IgG1, kappa

Clonality

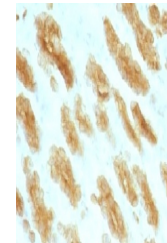
Monoclonal

Uniprot ID
[Q01546](#)
Dilution Range

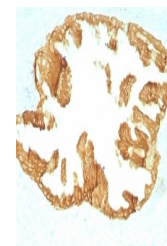
ELISA (For coating order Ab without BSA)Flow Cytometry: 0.5-1 ug/million cells in 0.1mlImmunofluorescence: 1-2 ug/mlWestern blot: 0.5-1 ug/mlImmunohistochemistry (FFPE): 0.25-0.5 ug/ml for 30 min at RT (1)Prediluted format: incubate for 30 min at RT (2)Optimal dilution of the Basic Cytokeratin antibody should be determined by the researcher.1. Staining of formalin-fixed tissues requires boiling tissue sections in 10mM Citrate buffer, pH 6.0, for 10-20 min followed by cooling at RT for 20 min.2. The prediluted format is supplied in a dropper bottle and is



Formalin paraffin human skin stained wit...



Formalin paraffin rat stomach stained wi...



Formalin paraffin rat oviduct with Basic...