

## Product Datasheet

### CDH1 Antibody (orb1252364)

**Description**

CDH1 Antibody

**Species/Host**

Mouse

**Reactivity**

Human

**Conjugation**

Unconjugated

**Tested**

FC, IF, IHC-P, WB

**Applications**
**Immunogen**

A full length recombinant human protein was used as the immunogen for the E-Cadherin antibody.

**Target**

CDH1

**Preservatives**

PBS with 0.1 mg/ml rAlbumin and 0.05% sodium azide

**Form/Appearance**

Liquid

**Concentration**

0.2 mg/mL

**Storage**

Aliquot and Store at 2-8°C. Avoid freeze-thaw cycles.

**Note**

For research use only

**Application notes**

Flow Cytometry: 0.5-1 ug/million cells in 0.1ml  
 Immunofluorescence: 0.5-1 ug/ml  
 Western blot: 0.5-1 ug/ml  
 Immunohistochemistry (FFPE): 1-2 ug/ml for 30 min at RT (1)  
 Optimal dilution of the E-Cadherin antibody should be determined by the researcher.  
 1. Staining of formalin-fixed tissues requires boiling tissue sections in 10mM Citrate buffer, pH 6.0, for 10-20 min followed by cooling at RT for 20 min.

**Isotype**

IgG1, kappa

**Clonality**

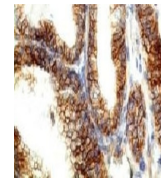
Monoclonal

**Uniprot ID**
**P12830**
**Dilution Range**

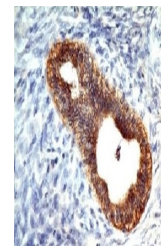
Flow Cytometry: 0.5-1 ug/million cells in 0.1ml  
 Immunofluorescence: 0.5-1 ug/ml  
 Western blot: 0.5-1 ug/ml  
 Immunohistochemistry (FFPE): 1-2 ug/ml for 30 min at RT (1)  
 Optimal dilution of the E-Cadherin antibody should be determined by the researcher.  
 1. Staining of formalin-fixed tissues requires boiling tissue sections in 10mM Citrate buffer, pH 6.0, for 10-20 min followed by cooling at RT for 20 min.

**Expiration Date**

12 months from date of receipt.



Formalin-fixed, paraffin-embedded human ...



Formalin-fixed, paraffin-embedded human ...



Formalin-fixed, paraffin-embedded human ...