

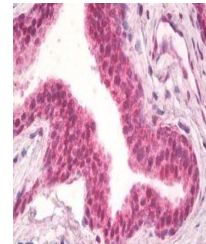
Product Datasheet

NPR3 antibody (orb125235)

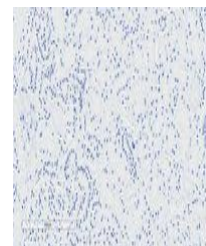
Description	Goat polyclonal antibody to NPR3
Species/Host	Goat
Reactivity	Bovine, Canine, Human, Mouse, Porcine, Rat
Conjugation	Unconjugated
Tested Applications	ELISA, IHC, WB
Target	NPR3 (aa520-533)
Preservatives	Supplied at 0.5 mg/ml in Tris saline, 0.02% sodium azide, pH 7.3 with 0.5% bovine serum albumin. Aliquot and store at -20°C. Minimize freezing and thawing.
Storage	Aliquot and store at -20°C. Minimize freezing and thawing.
Note	For research use only
Application notes	WB: Approx 52kDa band observed in Human Placenta lysates (calculated MW of 59.8kDa according to NP_000899.1). Recommended concentration: 1-3µg/ml.. IHC: In paraffin embedded Human Kidney shows staining of brush borders in select PCT. Recommended concentration: 2-4µg/ml. Paraffin embedded Human Prostate. Recommended concentration: 10µg/ml.
Protein Sequence	HRELREDSIRSHFS
Clonality	Polyclonal
MW	59.8
Entrez	4883
Dilution Range	ELISA: 1:16000, WB: 1-3 µg/ml, IHC-P: 10 µg/ml
Expiration Date	12 months from date of receipt.



Western blot analysis of Human Placenta ...



Immunohistochemical staining of Human Pr...



Immunohistochemical staining of Human Ki...