

## Product Datasheet

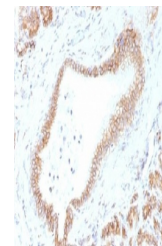
### CTNNB1 Antibody (orb1252327)

<b>Description</b>	CTNNB1 Antibody
<b>Species/Host</b>	Mouse
<b>Reactivity</b>	Human, Mouse, Rat
<b>Conjugation</b>	Unconjugated
<b>Tested Applications</b>	FC, IF, IHC-P, WB
<b>Immunogen</b>	A partial human recombinant protein was used as the immunogen for the Beta Catenin antibody.
<b>Target</b>	CTNNB1
<b>Preservatives</b>	PBS with 0.1 mg/ml rAlbumin and 0.05% sodium azide
<b>Form/Appearance</b>	Liquid
<b>Concentration</b>	0.2 mg/mL
<b>Storage</b>	Aliquot and Store at 2-8°C. Avoid freeze-thaw cycles.
<b>Note</b>	For research use only
<b>Application notes</b>	Flow Cytometry: 0.5-1 ug/million cells in 0.1ml Immunofluorescence: 1-2 ug/ml WB: 0.5-1 ug/ml IHC (FFPE): 1-2 ug/ml Optimal dilution of the Beta Catenin antibody to be determined by the researcher.
<b>Isotype</b>	IgG1, kappa
<b>Clonality</b>	Monoclonal
<b>Uniprot ID</b>	<b>P35222</b>
<b>Dilution Range</b>	Flow Cytometry: 0.5-1 ug/million cells in 0.1ml Immunofluorescence: 1-2 ug/ml WB: 0.5-1 ug/ml IHC (FFPE): 1-2 ug/ml Optimal dilution of the Beta Catenin antibody to be determined by the researcher.
<b>Expiration Date</b>	12 months from date of receipt.

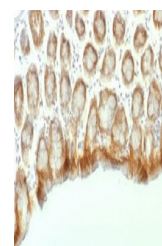


IHC testing of FFPE human tonsil tissue

...



IHC testing of FFPE human pancreas tissue...



IHC testing of FFPE mouse colon tissue w...