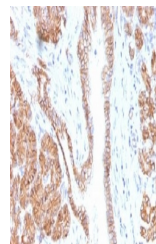


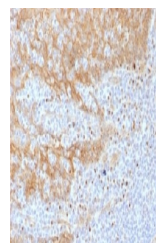
Product Datasheet

CTNNB1 Antibody (orb1252326)

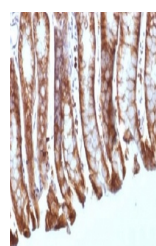
Description	CTNNB1 Antibody
Species/Host	Mouse
Reactivity	Human, Mouse, Rat
Conjugation	Unconjugated
Tested Applications	FC, IF, IHC-P, WB
Immunogen	A partial human recombinant protein was used as the immunogen for the Beta Catenin antibody.
Target	CTNNB1
Preservatives	PBS with 0.1 mg/ml rAlbumin and 0.05% sodium azide
Form/Appearance	Liquid
Concentration	0.2 mg/mL
Storage	Aliquot and Store at 2-8°C. Avoid freeze-thaw cycles.
Note	For research use only
Application notes	Flow Cytometry: 0.5-1 ug/million cells in 0.1ml Immunofluorescence: 1-2 ug/ml WB: 0.5-1 ug/ml IHC (FFPE): 1-2 ug/ml Optimal dilution of the Beta Catenin antibody to be determined by the researcher.
Isotype	IgG1, kappa
Clonality	Monoclonal
Uniprot ID	P35222
Dilution Range	Flow Cytometry: 0.5-1 ug/million cells in 0.1ml Immunofluorescence: 1-2 ug/ml WB: 0.5-1 ug/ml IHC (FFPE): 1-2 ug/ml Optimal dilution of the Beta Catenin antibody to be determined by the researcher.
Expiration Date	12 months from date of receipt.



IHC testing of FFPE human pancreas tissue...



IHC testing of FFPE human tonsil tissue ...



IHC testing of FFPE mouse colon tissue w...