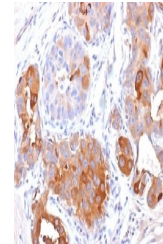


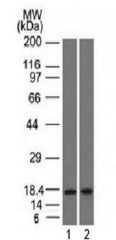
Product Datasheet

PIP Antibody (orb1252300)

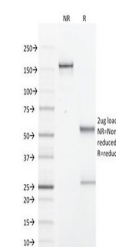
Description	PIP Antibody
Species/Host	Mouse
Reactivity	Human
Conjugation	Unconjugated
Tested Applications	FC, IF, IHC-P, WB
Immunogen	A human partial recombinant protein corresponding to amino acids 41-146 was used as the immunogen for the PIP antibody.
Target	PIP
Preservatives	PBS with 0.1 mg/ml rAlbumin and 0.05% sodium azide
Form/Appearance	Liquid
Concentration	0.2 mg/mL
Storage	Aliquot and Store at 2-8°C. Avoid freeze-thaw cycles.
Note	For research use only
Application notes	IF: 0.5-1 ug/ml Flow Cytometry: 0.5-1 ug/million cells in 0.1ml WB: 0.5-1 ug/ml IHC (FFPE): 0.5-1 ug/ml for 30 min at RT Titering of the PIP antibody may be required for optimal performance.
Isotype	IgG2a, kappa
Clonality	Monoclonal
Uniprot ID	P12273
Dilution Range	IF: 0.5-1 ug/ml Flow Cytometry: 0.5-1 ug/million cells in 0.1ml WB: 0.5-1 ug/ml IHC (FFPE): 0.5-1 ug/ml for 30 min at RT Titering of the PIP antibody may be required for optimal performance.
Expiration Date	12 months from date of receipt.



IHC testing of FFPE human breast carcinoma...



Western blot testing of human 1) pancrea...



SDS-PAGE Analysis of Purified, BSA-Free ...