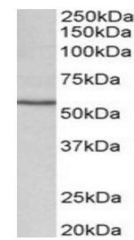


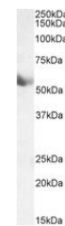
Product Datasheet

cyp1a1 antibody (orb125228)

Description	Goat Polyclonal to cyp1a1. NP_001129531.1, PMID: 21357676.
Species/Host	Goat
Reactivity	Mouse, Rat
Conjugation	Unconjugated
Tested Applications	ELISA, IF, IHC, WB
Target	cytochrome P450 1A1 (mouse)
Preservatives	Supplied at 0.5 mg/ml in Tris saline, 0.02% sodium azide, pH 7.3 with 0.5% bovine serum albumin. Aliquot and store at -20°C. Minimize freezing and thawing.
Storage	Aliquot and store at -20°C. Minimize freezing and thawing.
Note	For research use only
Application notes	WB: Approx 55kDa band observed in Human and Rat Lung lysates (calculated MW of 58.2kDa according to Human NP_000490.1 and 59.4kDa according to Rat NP_036672.). Primary incubation was 1 hour. Recommended concentration: 0.1-0.3µg/ml.. IHC: Paraffin embedded Human Tonsil. Recommended concentration: 10µg/ml.. Notes: Immunofluorescence: Strong expression of the protein seen in the ER and cytoplasm of NIH3T3 cells. Recommended concentration: 10µg/ml.
Protein Sequence	QDRKLDENANVQLSD
Clonality	Polyclonal
MW	59.2
Dilution Range	ELISA: 1:64000, WB: 0.1-0.3 µg/ml, IHC-P: 10 µg/ml
Expiration Date	12 months from date of receipt.



Western blot analysis of Human Lung lysa...



Western blot analysis of Rat Lung lysate...