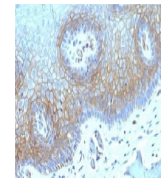
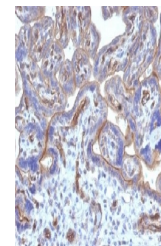

Product Datasheet

THBD Antibody (orb1252263)

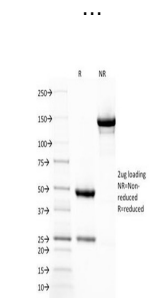
| | |
|----------------------------|--|
| Description | THBD Antibody |
| Species/Host | Mouse |
| Reactivity | Human |
| Conjugation | Unconjugated |
| Tested Applications | ELISA, FC, IF, IHC-P, WB |
| Immunogen | Human recombinant partial protein corresponding to amino acids 69-194 was used as the immunogen for this Thrombomodulin antibody. |
| Target | THBD |
| Preservatives | PBS with 0.1 mg/ml rAlbumin and 0.05% sodium azide |
| Form/Appearance | Liquid |
| Concentration | 0.2 mg/mL |
| Storage | Aliquot and Store at 2-8°C. Avoid freeze-thaw cycles. |
| Note | For research use only |
| Application notes | Flow Cytometry: 0.5-1ug/10 ⁶ cells in 0.1mlIF: 0.5-1 ug/mlIHC (FFPE): 1-2 ug/ml for 30 min at RTELISA: 2-4 ug/ml; order the BSA-free formulation for coatingThe concentration stated for each application is a general starting point. Variations in protocols, secondaries and substrates may require the Thrombomodulin antibody to be titrated up or down for optimal performance. |
| Isotype | IgG2a, kappa |
| Clonality | Monoclonal |
| Uniprot ID | P07204 |
| Dilution Range | Flow Cytometry: 0.5-1ug/10 ⁶ cells in 0.1mlIF: 0.5-1 ug/mlIHC (FFPE): 1-2 ug/ml for 30 min at RTELISA: 2-4 ug/ml; order the BSA-free formulation for coatingThe concentration stated for each application is a general starting point. Variations in protocols, secondaries and substrates may require the Thrombomodulin antibody to be titrated up or down for optimal performance. |
| Expiration Date | 12 months from date of receipt. |



IHC testing of FFPE human cervical carci...



IHC testing of FFPE human placenta with



SDS-PAGE Analysis of Purified, BSA-Free ...