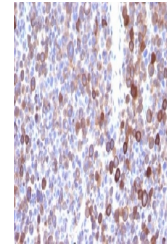


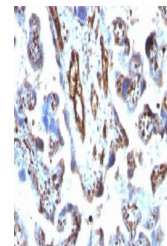
Product Datasheet

MSN Antibody (orb1252247)

Description	MSN Antibody
Species/Host	Mouse
Reactivity	Human, Rat
Conjugation	Unconjugated
Tested Applications	FC, IF, IHC-P, WB
Immunogen	Recombinant full-length human protein was used as the immunogen for the Moesin antibody.
Target	MSN
Preservatives	PBS with 0.1 mg/ml rAlbumin and 0.05% sodium azide
Form/Appearance	Liquid
Concentration	0.2 mg/mL
Storage	Aliquot and Store at 2-8°C. Avoid freeze-thaw cycles.
Note	For research use only
Application notes	Flow Cytometry: 0.5-1 ug/million cells in 0.1ml Immunofluorescence: 0.5-1 ug/ml Immunohistochemistry (FFPE): 0.5-1 ug/ml for 30 min at RT WB: 0.5-1 ug/ml Titerting of the Moesin antibody may be required for optimal performance.
Isotype	IgG1, kappa
Clonality	Monoclonal
Uniprot ID	P26038
Dilution Range	Flow Cytometry: 0.5-1 ug/million cells in 0.1ml Immunofluorescence: 0.5-1 ug/ml Immunohistochemistry (FFPE): 0.5-1 ug/ml for 30 min at RT WB: 0.5-1 ug/ml Titerting of the Moesin antibody may be required for optimal performance.
Expiration Date	12 months from date of receipt.



IHC testing of FFPE human melanoma with ...



IHC testing of FFPE human placenta with ...



IHC testing of FFPE rat colon with Moesi...