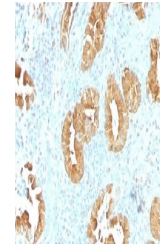


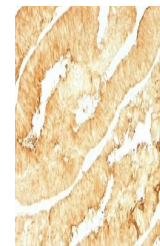
## Product Datasheet

### VIL1 Antibody (orb1252237)

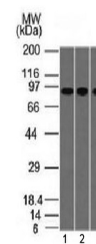
<b>Description</b>	VIL1 Antibody
<b>Species/Host</b>	Mouse
<b>Reactivity</b>	Human
<b>Conjugation</b>	Unconjugated
<b>Tested Applications</b>	FC, IF, IHC-P, WB
<b>Immunogen</b>	Amino acids 179-311 from the human protein were used as the immunogen for this Villin antibody.
<b>Target</b>	VIL1
<b>Preservatives</b>	PBS with 0.1 mg/ml rAlbumin and 0.05% sodium azide
<b>Form/Appearance</b>	Liquid
<b>Concentration</b>	0.2 mg/mL
<b>Storage</b>	Aliquot and Store at 2-8°C. Avoid freeze-thaw cycles.
<b>Note</b>	For research use only
<b>Application notes</b>	Flow Cytometry: 0.5-1ug/10 <sup>6</sup> cells in 0.1mlIF: 1-2 ug/mlWestern blot: 1-2 ug/mlIHC (FFPE): 0.25-0.5 ug/ml for 30 min at RTTitration of the Villin antibody may be required for optimal performance.
<b>Isotype</b>	IgG1, kappa
<b>Clonality</b>	Monoclonal
<b>Uniprot ID</b>	<b>P09327</b>
<b>Dilution Range</b>	Flow Cytometry: 0.5-1ug/10 <sup>6</sup> cells in 0.1mlIF: 1-2 ug/mlWestern blot: 1-2 ug/mlIHC (FFPE): 0.25-0.5 ug/ml for 30 min at RTTitration of the Villin antibody may be required for optimal performance.
<b>Expiration Date</b>	12 months from date of receipt.



IHC testing of FFPE human rectum tissue ...



IHC testing of FFPE human colon with Vil...



Western blot testing of human 1) A549, 2...