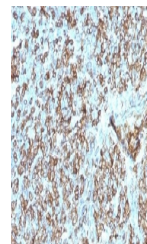


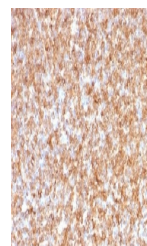
Product Datasheet

HLA-DPB1, HLA-DQA1 Antibody (orb1252224)

| | |
|----------------------------|--|
| Description | HLA-DPB1, HLA-DQA1 Antibody |
| Species/Host | Mouse |
| Reactivity | Human |
| Conjugation | Unconjugated |
| Tested Applications | IF, IHC-P, WB |
| Immunogen | Human tonsil cells were used as the immunogen for the HLA-DP/DQ/DR antibody. |
| Target | HLA-DPB1, HLA-DQA1 |
| Preservatives | PBS with 0.1 mg/ml rAlbumin and 0.05% sodium azide |
| Form/Appearance | Liquid |
| Concentration | 0.2 mg/mL |
| Storage | Aliquot and Store at 2-8°C. Avoid freeze-thaw cycles. |
| Note | For research use only |
| Application notes | WB: 1-2 ug/ml Immunofluorescence: 0.5-1 ug/ml Immunohistochemistry (FFPE): 1-2 ug/ml for 30 min at RT Optimal dilution of the HLA-DP/DQ/DR antibody should be determined by the researcher. |
| Isotype | IgG1, kappa |
| Clonality | Monoclonal |
| Uniprot ID | P01909 , P01903 , P01908 , P04440 , P01920 |
| Dilution Range | WB: 1-2 ug/ml Immunofluorescence: 0.5-1 ug/ml Immunohistochemistry (FFPE): 1-2 ug/ml for 30 min at RT Optimal dilution of the HLA-DP/DQ/DR antibody should be determined by the researcher. |
| Expiration Date | 12 months from date of receipt. |



IHC testing of FFPE human tonsil tissue ...



IHC testing of FFPE human tonsil tissue ...



Western blot testing of human Raji cell ...