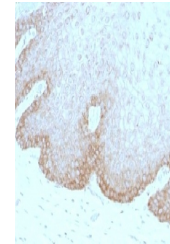


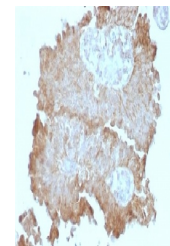
Product Datasheet

FAT2 Antibody (orb1252213)

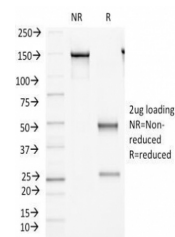
Description	FAT2 Antibody
Species/Host	Mouse
Reactivity	Human
Conjugation	Unconjugated
Tested Applications	FC, IF, IHC, WB
Immunogen	A recombinant human Protocadherin Fat 2 fusion protein was used as the immunogen for this FAT2 antibody.
Target	FAT2
Preservatives	PBS with 0.1 mg/ml rAlbumin and 0.05% sodium azide
Form/Appearance	Liquid
Concentration	0.2 mg/mL
Storage	Aliquot and Store at 2-8°C. Avoid freeze-thaw cycles.
Note	For research use only
Application notes	Flow Cytometry: 0.5-1 ug/million cells in 0.1ml Immunofluorescence: 1-2 ug/ml IHC (FFPE): 0.5-1 ug/ml for 30 minutes at RT Titering of the FAT2 antibody may be required for optimal performance.
Isotype	IgG1, kappa
Clonality	Monoclonal
Uniprot ID	Q9NYQ8
Dilution Range	Flow Cytometry: 0.5-1 ug/million cells in 0.1ml Immunofluorescence: 1-2 ug/ml IHC (FFPE): 0.5-1 ug/ml for 30 minutes at RT Titering of the FAT2 antibody may be required for optimal performance.
Expiration Date	12 months from date of receipt.



IHC testing of human cervical carcinoma ...



IHC testing of human bladder carcinoma w...



SDS-PAGE Analysis of Purified, BSA-Free ...