
Product Datasheet

ALPL Antibody (orb1252202)

Description

ALPL Antibody

Species/Host

Mouse

Reactivity

Bovine, Human

Conjugation

Unconjugated

Tested Applications

FC, IF, IHC-P

Immunogen

Recombinant human ALPL protein was used as the immunogen for the Alkaline Phosphatase antibody.

Target

ALPL

Preservatives

PBS with 0.1 mg/ml rAlbumin and 0.05% sodium azide

Form/Appearance

Liquid

Concentration

0.2 mg/mL

Storage

Aliquot and Store at 2-8°C. Avoid freeze-thaw cycles.

Note

For research use only

Application notes

Flow Cytometry: 0.5-1 ug/million cells in 0.1ml
 Immunofluorescence: 0.5-1 ug/ml
 Immunohistochemistry (FFPE): 1-2 ug/ml for 30 min at RT
 Prediluted format : incubate for 30 min at RT (1)
 Optimal dilution of the Alkaline Phosphatase antibody should be determined by the researcher.1. The prediluted format is supplied in a dropper bottle and is optimized for use in IHC. After epitope retrieval step (if required), drip mAb solution onto the tissue section and incubate at RT for 30 min.

Isotype

IgG1, kappa

Clonality

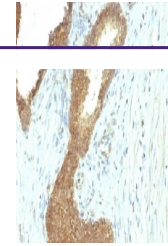
Monoclonal

Uniprot ID
P05186
Dilution Range

Flow Cytometry: 0.5-1 ug/million cells in 0.1ml
 Immunofluorescence: 0.5-1 ug/ml
 Immunohistochemistry (FFPE): 1-2 ug/ml for 30 min at RT
 Prediluted format : incubate for 30 min at RT (1)
 Optimal dilution of the Alkaline Phosphatase antibody should be determined by the researcher.1. The prediluted format is supplied in a dropper bottle and is optimized for use in IHC. After epitope retrieval step (if required), drip mAb solution onto the tissue section and incubate at RT for 30 min.

Expiration Date

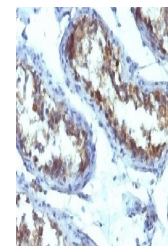
12 months from date of receipt.



IHC testing of FFPE human colon carcinom...



IHC testing of FFPE human endometrial ca...



IHC testing of FFPE human testicular car...