
Product Datasheet

CDX2 Antibody (orb1252193)

Description

CDX2 Antibody

Species/Host

Mouse

Reactivity

Human

Conjugation

Unconjugated

Tested Applications

FC, IF, IHC-P, WB

Immunogen

Amino acids 150-249 from the human protein were used as the immunogen for this CDX2 antibody.

Target

CDX2

Preservatives

PBS with 0.1 mg/ml rAlbumin and 0.05% sodium azide

Form/Appearance

Liquid

Concentration

0.2 mg/mL

Storage

Aliquot and Store at 2-8°C. Avoid freeze-thaw cycles.

Note

For research use only

Application notes

Flow Cytometry: 0.5-1 ug/million cells in 0.1mlIF: 1-2 ug/mlIHC (FFPE): 0.5-1 ug/ml for 30 min at RTThe concentration stated for each application is a general starting point. Variations in protocols, secondaries and substrates may require the CDX2 antibody to be titered up or down for optimal performance.

Isotype

IgG2a, kappa

Clonality

Monoclonal

Uniprot ID

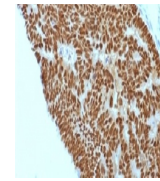
[Q99626](#)

Dilution Range

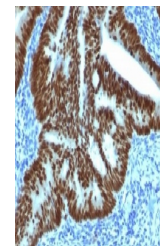
Flow Cytometry: 0.5-1 ug/million cells in 0.1mlIF: 1-2 ug/mlIHC (FFPE): 0.5-1 ug/ml for 30 min at RTThe concentration stated for each application is a general starting point. Variations in protocols, secondaries and substrates may require the CDX2 antibody to be titered up or down for optimal performance.

Expiration Date

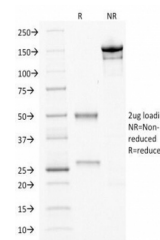
12 months from date of receipt.



IHC testing of FFPE human colon carcinoma...



IHC testing of FFPE human colon carcinoma...



SDS-PAGE Analysis of Purified, BSA-Free ...