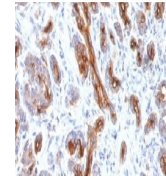

Product Datasheet

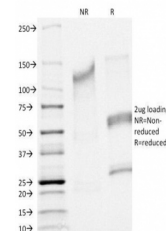
CFTR Antibody (orb1252187)

Description	CFTR Antibody
Species/Host	Mouse
Reactivity	Human
Conjugation	Unconjugated
Tested Applications	IF, IHC-P, WB
Immunogen	Human recombinant protein was used as the immunogen for this CFTR antibody.
Target	CFTR
Preservatives	PBS with 0.1 mg/ml rAlbumin and 0.05% sodium azide
Form/Appearance	Liquid
Concentration	0.2 mg/mL
Storage	Aliquot and Store at 2-8°C. Avoid freeze-thaw cycles.
Note	For research use only
Application notes	Immunofluorescence: 1-2 ug/ml Western blot: 0.5-1 ug/ml IHC (FFPE): 0.5-1 ug/ml for 30 min at RT The concentration stated for each application is a general starting point. Variations in protocols, secondaries and substrates may require the CFTR antibody to be titered up or down for optimal performance.
Isotype	IgG1
Clonality	Monoclonal
Uniprot ID	P13569
Dilution Range	Immunofluorescence: 1-2 ug/ml Western blot: 0.5-1 ug/ml IHC (FFPE): 0.5-1 ug/ml for 30 min at RT The concentration stated for each application is a general starting point. Variations in protocols, secondaries and substrates may require the CFTR antibody to be titered up or down for optimal performance.
Expiration Date	12 months from date of receipt.



IHC testing of FFPE human pancreas with

...



SDS-PAGE Analysis of Purified, BSA-Free ...