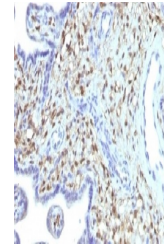


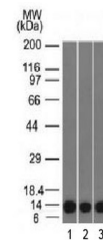
## Product Datasheet

### S100A4 Antibody (orb1252182)

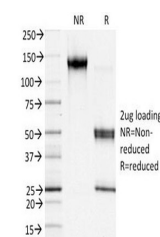
<b>Description</b>	S100A4 Antibody
<b>Species/Host</b>	Mouse
<b>Reactivity</b>	Human, Mouse
<b>Conjugation</b>	Unconjugated
<b>Tested Applications</b>	IF, IHC-P, WB
<b>Immunogen</b>	Human recombinant S100A4/FSP1 protein was used as the immunogen for this FSP1 antibody.
<b>Target</b>	S100A4
<b>Preservatives</b>	PBS with 0.1 mg/ml rAlbumin and 0.05% sodium azide
<b>Form/Appearance</b>	Liquid
<b>Concentration</b>	0.2 mg/mL
<b>Storage</b>	Aliquot and Store at 2-8°C. Avoid freeze-thaw cycles.
<b>Note</b>	For research use only
<b>Application notes</b>	Western blot: 0.5-1 ug/ml Immunofluorescence: 1-2 ug/ml Immunohistochemistry (FFPE): 0.25-0.5 ug/ml for 30 min at RT The optimal dilution of the FSP1 antibody for each application should be determined by the researcher.
<b>Isotype</b>	IgG1, kappa
<b>Clonality</b>	Monoclonal
<b>Uniprot ID</b>	<b>P26447</b>
<b>Dilution Range</b>	Western blot: 0.5-1 ug/ml Immunofluorescence: 1-2 ug/ml Immunohistochemistry (FFPE): 0.25-0.5 ug/ml for 30 min at RT The optimal dilution of the FSP1 antibody for each application should be determined by the researcher.
<b>Expiration Date</b>	12 months from date of receipt.



IHC testing of FFPE human placenta with ...



Western blot testing of human 1) HeLa, 2...



SDS-PAGE Analysis of Purified, BSA-Free ...